

TANDEM ALUMINIUM LINEAR HOUSINGS

These units are manufactured from aluminium alloy and incorporate two ball bushings in line.

Using these aluminium tandem sets eliminates the difficulty of perfectly aligning two single housings.

As with our other housings the tandem sets are available with different types of ball bushings.

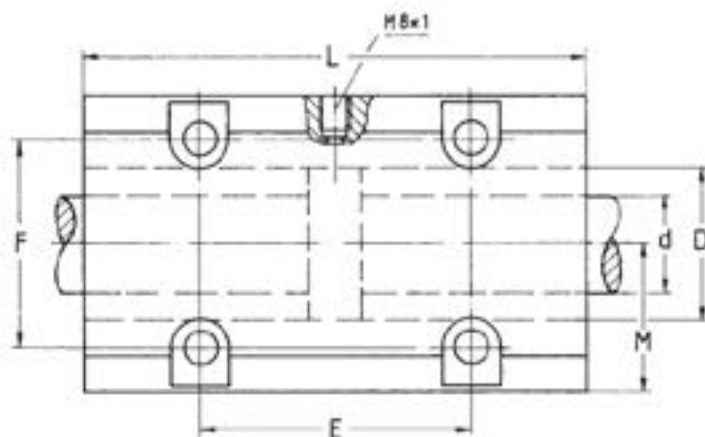
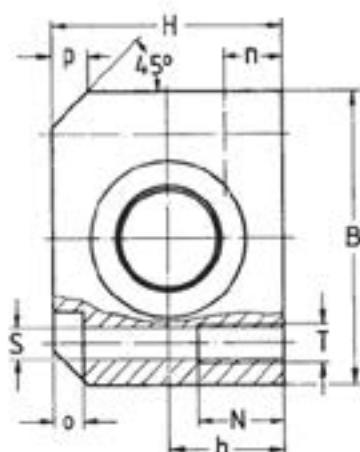
The various options (shown here for a 20mm shaft) are:

Ball bushing with plastic cage and seals: TE85-220

All steel ball bushing without seal: TE85-020

All STAINLESS steel bushing without seal TE85-520

The sealed types can operate up to 80°C. Above this temperature specify unsealed (TE85-0..).



| PART | d | B | H | h | L | D | E | F | M | S | T | N | n | o | p | Load C (N) | Load C ₀ (N) | Weight (kg) |
|----------|----|-----|-----|----|-----|----|-----|-----|----|------|-----|----|----|----|----|---------------|----------------------------|----------------|
| TE85-212 | 12 | 42 | 35 | 18 | 76 | 22 | 40 | 30 | 21 | 5.3 | M6 | 13 | 10 | 4 | 5 | 820 | 1560 | 0.32 |
| TE85-216 | 16 | 52 | 42 | 22 | 84 | 26 | 45 | 36 | 26 | 5.3 | M6 | 13 | 12 | 5 | 6 | 930 | 1780 | 0.48 |
| TE85-220 | 20 | 60 | 50 | 25 | 104 | 32 | 55 | 45 | 30 | 6.6 | M8 | 18 | 13 | 6 | 7 | 1380 | 2800 | 0.84 |
| TE85-225 | 25 | 76 | 60 | 30 | 130 | 40 | 70 | 54 | 38 | 8.4 | M10 | 22 | 15 | 8 | 9 | 1570 | 3200 | 1.62 |
| TE85-230 | 30 | 86 | 70 | 35 | 152 | 47 | 85 | 62 | 43 | 10.5 | M12 | 26 | 16 | 8 | 10 | 2560 | 5400 | 2.46 |
| TE85-240 | 40 | 108 | 90 | 45 | 176 | 62 | 100 | 80 | 54 | 13.5 | M16 | 34 | 20 | 10 | 12 | 3520 | 8000 | 4.79 |
| TE85-250 | 50 | 130 | 105 | 50 | 224 | 75 | 125 | 100 | 65 | 13.5 | M16 | 34 | 20 | 12 | 13 | 6080 | 15800 | 8.06 |

Available with ± 0.02 mm tolerance for side mounting

These Aluminium Sets are also available slotted as Adjustable Type sets. Order part no TE32- ... with suffix depending on ball bushing required (see above).

The mounting holes are then the same (E F & T) as the TE33 – see page 30.

In general, because of the close tolerances of ball bushings fitted to our Aluminium sets we do not recommend the use of the adjustable type.

Tel. 01908 511733

www.euro-bearings.com

EURO-BEARINGS LTD