

OPEN CAST IRON LINEAR HOUSINGS

These spheroidal graphite cast iron housings are equipped with open type ball bushings that are secured against displacement by a grub screw. This enables easy interchange of the bushings.

The housings can be mounted so that the load is able to act in any direction.

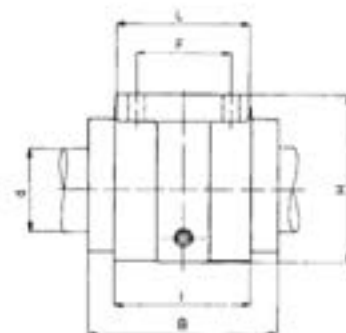
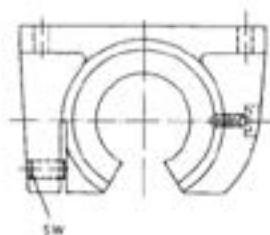
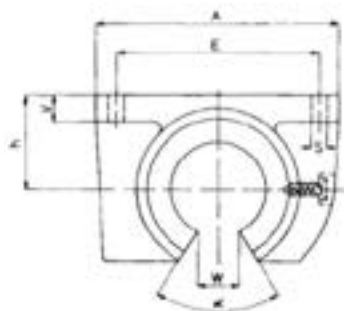
The high precision of these units ensures full mutual interchangeability.

The housing can be fitted with either a sealed linear bearing with plastic cage (LE67-2..) or with an all steel linear bearing (LE67-0..).



Open:
LE67-0.. (without seals)
LE67-2.. (with seals)

Adjustable:
LE68-0.. (without seals)
LE68-2.. (with seals)



PART (Open)	PART (Adjustable)	d	h	H	B	A	L	I	E	F	S	V	SW	W	α	Weight (kg)
LE67-.12	LE68-.12	12	18	28	32	42	32	20	32	23	4.5	5.5	2.5	7.5	78	0.13
LE67-.16	LE68-.16	16	22	35	36	50	35	22	40	26	4.5	6.5	2.5	10	78	0.21
LE67-.20	LE68-.20	20	25	42	45	60	42	28	45	32	4.5	8	2.5	10	60	0.36
LE67-.25	LE68-.25	25	30	51	58	74	54	40	60	40	5.5	9	3	12.5	60	0.73
LE67-.30	LE68-.30	30	35	60	68	84	60	48	68	45	6.6	10	3	12.5	50	1.18
LE67-.40	LE68-.40	40	45	77	80	108	78	56	86	58	9	12	4	16.8	50	2.30
LE67-.50	LE68-.50	50	50	88	100	130	70	72	108	50	9	14	5	21	50	3.10
LE67-.60	LE68-.60	60	60	105	125	160	92	95	132	65	11	15	5	27.2	54	5.78
LE67-.80	LE68-.80	80	80	140	165	200	122	125	170	90	13	22	6	36.3	54	12.80