

CAST IRON LINEAR HOUSINGS

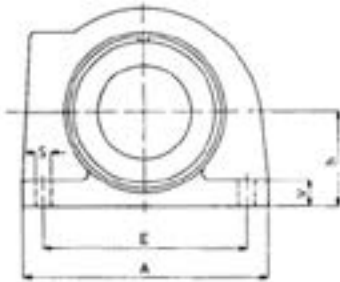
These bearing housings are manufactured from spheroidal graphite cast iron. The standard ball bushings are fitted to the closed (LE65-) and adjustable (LE66-) housings using external circlips located in the circlip grooves on the exterior of the ball bushing.

The design of the housing allows a mounting position that enables the load to act in any direction providing a high rigidity. The high precision of these units ensures full mutual interchangeability.

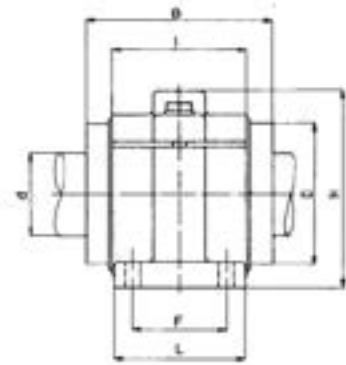
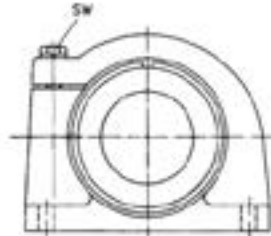
The housings can be fitted with either a sealed linear bearing with plastic cage (LE65-2..) or with an all steel linear bearing (LE65-0..).



Closed:
LE65-0.. (without seals)
LE65-2.. (with seals)



Adjustable:
LE66-0.. (without seals)
LE66-2.. (with seals)



PART (Closed)	PART (Adjustable)	d	D	h	H	B	A	L	I	E	F	S	V	SW	Weight (kg)
LE65-.08	LE66-.08	8	16	15	28	25	32	28	14	25	20	3.4	5	5.5	0.09
LE65-.12	LE66-.12	12	22	18	35	32	42	32	20	32	23	4.5	5.5	7	0.16
LE65-.16	LE66-.16	16	26	22	42	36	50	35	22	40	26	4.5	6.5	7	0.24
LE65-.20	LE66-.20	20	32	25	50	45	60	42	28	45	32	4.5	8	7	0.43
LE65-.25	LE66-.25	25	40	30	60	58	74	54	40	60	40	5.5	9	8	0.86
LE65-.30	LE66-.30	30	47	35	70	68	84	60	48	68	45	6.6	10	10	1.34
LE65-.40	LE66-.40	40	62	45	90	80	108	78	56	86	58	9	12	13	2.67
LE65-.50	LE66-.50	50	75	50	105	100	130	70	72	108	50	9	14	13	3.74
LE65-.60	LE66-.60	60	90	60	125	125	160	92	95	132	65	11	15	17	6.77
LE65-.80	LE66-.80	80	120	80	170	165	200	122	125	170	90	13	22	19	15.50

Tel. 01908 511733

www.euro-bearings.com

EURO-BEARINGS LTD