

FLANGED LINEAR HOUSINGS

The flanged linear housings consist of a spheroidal graphite cast iron housing containing a ball bushing. The housing can be attached vertically or horizontally to the supporting surface.

The incorporated ball bushing is supported over its whole recirculating length.

As with our housings, these flanged sets are available with different types of ball bushings.

Permutations available: (example is for 20mm bore)

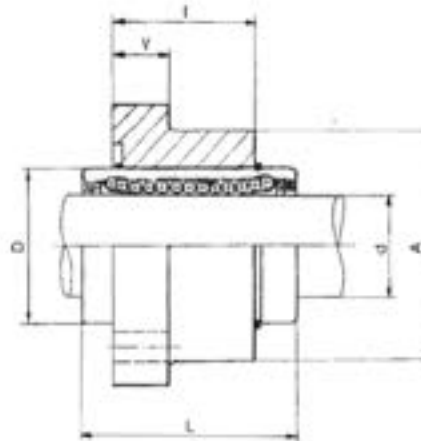
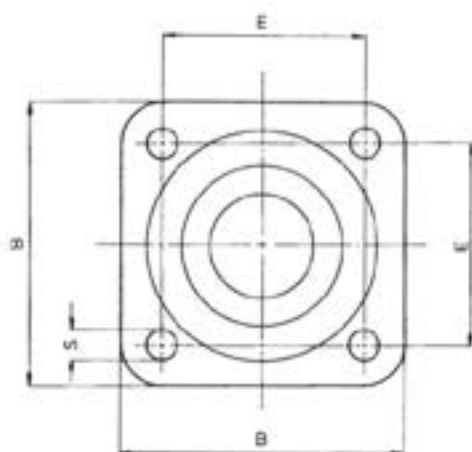
Ball bushing with plastic cage and seals: FE81-220

All steel ball bushing without seal: FE81-020

All STAINLESS steel bushing without seal FE81-520

The sealed types can operate up to 80°C.

For high temperature applications specify the unsealed version (FE81-0..).



PART (no seals)	PART (2 seals)	d	B	L	I	D	A	E	S	V	Weight (kg)
FE81-012	FE81-212	12	42	32	22	22	30	30	5.5	6	0.14
FE81-016	FE81-216	16	50	36	24	26	36	35	5.5	8	0.23
FE81-020	FE81-220	20	60	45	30	32	42	42	6.6	10	0.38
FE81-025	FE81-225	25	74	58	42	40	54	54	6.6	12	0.78
FE81-030	FE81-230	30	84	68	50	47	62	60	9	14	1.23
FE81-040	FE81-240	40	108	80	59	62	82	78	11	16	2.31
FE81-050	FE81-250	50	130	100	75	75	100	98	11	18	4.32
FE81-060	FE81-260	60	160	125	99	90	118	120	14	22	7.94
FE81-080	FE81-280	80	200	165	130	120	156	155	14	26	16.75

For applications using rail supported shafts these flanged linear sets are available as open type sets. Please refer to the table above for housing detail and the tables for open type ball bushings for the bushing details



Part number becomes FE83-... (suffixes as above for different ball bushing types)