

ALUMINIUM LINEAR HOUSINGS

These lightweight yet heavy duty aluminium sets offer high accuracy. They consist of a corrosion resistant, highly rigid aluminium housing and a double sealed ball bushing.

The user can choose from all steel ball bushings, ball bushing with plastic cage, or our super ball bushings.

High speeds and accelerations are possible.

Permutations available: (example is for 20mm bore)

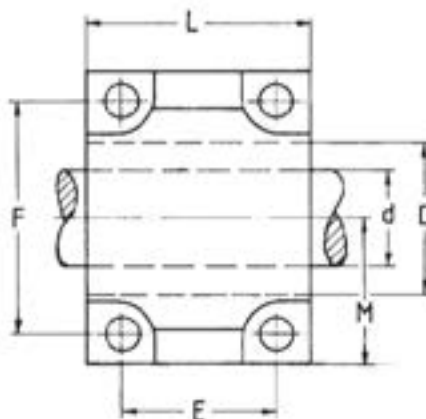
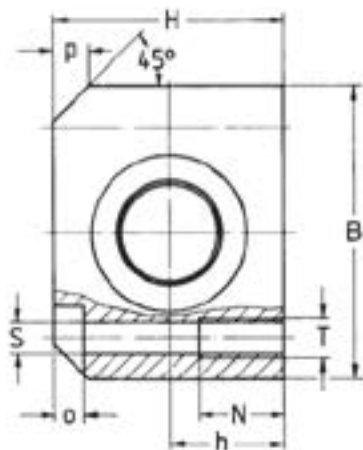
Ball bushing with plastic cage and seals: AE35-220

All steel ball bushing without seals: AE35-020

All STAINLESS steel bushing without seals: AE35-520

The sealed type (AE35-2..) can operate in temperatures of up to 80°C.

For high temperature applications specify the steel / unsealed version AE35-0..



PART	d	B	H	h	L	D	E	F	M	S	T	N	O	P	Load C (N)	Load C ₀ (N)	Weight (kg)
AE35-212	12	42	35	18	39	22	23	32	21	4.3	M5	11	4	5	510	780	0.14
AE35-216	16	52	42	22	43	26	26	40	26	5.3	M6	13	5	6	580	890	0.20
AE35-220	20	60	50	25	54	32	32	45	30	6.6	M8	18	6	7	860	1400	0.38
AE35-225	25	76	60	30	67	40	40	60	38	8.4	M10	22	8	9	980	1600	0.73
AE35-230	30	86	70	35	79	47	45	68	43	8.4	M10	22	8	10	1600	2700	1.12
AE35-240	40	108	90	45	91	62	58	86	54	10.5	M12	26	10	12	2200	4000	2.30
AE35-250	50	130	105	50	113	75	50	108	65	13.5	M16	34	12	13	3800	7900	3.80

Available with ± 0.02 mm tolerance for side mounting

These Aluminium Sets are also available slotted as Adjustable Type sets. Order part no AE36- ... with suffix depending on ball bushing required (see above). In general, because of the close tolerances of ball bushings fitted to our aluminium sets we do not recommend the use of the adjustable type.

Tel. 01908 511733

www.euro-bearings.com

EURO-BEARINGS LTD