

REVERSE ROUND FLANGED BALL BUSHES

These ball bushings are designed with a flange that allows the bush to be mounted against a bulkhead. This reverse mounting means that the shorter part of the bushing is inserted into the housing (or bulkhead) and the longer part is protruding.

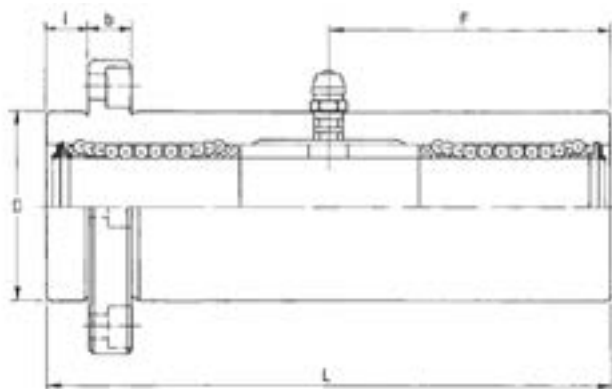
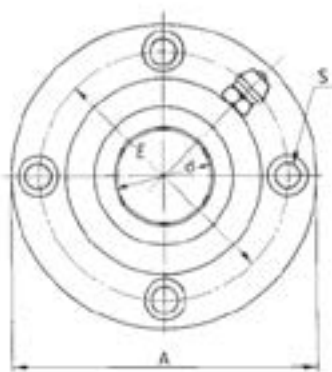
The fixing holes are counterbored on the opposite side of the flange to the usual arrangement to allow for this specific type of fixing. In addition, they are easily re-lubricated via the nipple (see drawing below)

The standard type has 2 seals and a plastic cage.

Part number **FK62-3..**

It is also available with all parts in steel.

Part number **FK60-0..**



PART (2 seals)	d	D	L	b	I	A	E	F	S	Load C (N)	Load C ₀ (N)	Weight (kg)
FK62-308	8	19	66	6	6	40	29	29	M4	440	800	0.135
FK62-312	12	26	84	6	6	46	36	41	M4	830	1600	0.284
FK62-316	16	32	103	8	8	54	43	51	M5	1250	2400	0.412
FK62-320	20	40	118	8	8	62	51	59	M5	1430	2800	0.752
FK62-325	25	45	165	10	10	74	60	82.5	M6	1590	3200	1.244
FK62-330	30	52	182	10	10	82	67	91	M6	2540	5600	1.636
FK62-340	40	65	230	13	13	101	83	115	M8	3500	8200	2.950
FK62-350	50	85	290	18	18	129	107	145	M10	6200	16200	6.860