

# COMBINED LINEAR & RADIAL BUSHES

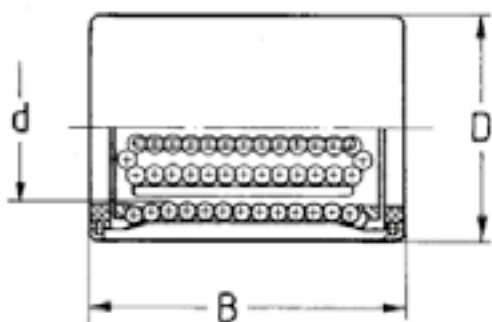
These rotating and sliding ball bushings allow both types of high precision motion. These motions can occur either separately or simultaneously. Given the same shaft size, the outside diameter of these ball bushings is much smaller than a combination of a standard ball bushing and a radial ball or roller bearing.

We now offer these bushes in two forms: 0662 Series with brass cage & RK series with circlip grooves in outer ring & steel cage.

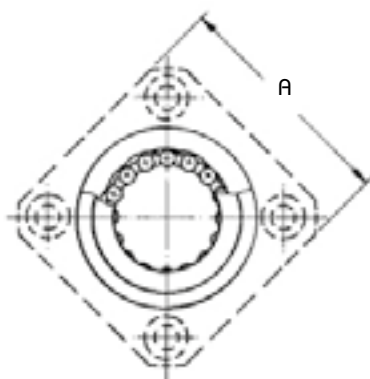
0662 & RK00 do not have a flange, while RK20 has a square flange but no circlip grooves.



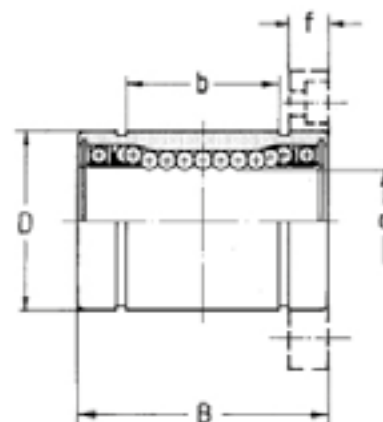
0662-...



RK20-0..



RK00-0..



PART (Plastic seals)	PART (Steel shields)	d	D	B	b	A	f	E	S	Load C (N)	Load C <sub>0</sub> (N)	Max RPM	Weight (kg)	Circlip Size
0662-006		6	10	19						75	100	1000	0.008	
	RK.0-006	6	12	19	11	22	5	20	3.5	78	176	300	0.010	12x1
0662-008		8	14	23						140	210	750	0.014	
	RK.0-008	8	15	24	15	25	5	24	3.5	137	314	300	0.015	15x1
0662-012		12	19	31						340	540	500	0.031	
	RK.0-012	12	21	30	20	32	6	32	4.5	274	588	300	0.040	21x1.2
0662-016		16	25	35						565	890	375	0.060	
	RK.0-016	16	28	37	23	37	6	38	4.5	451	882	250	0.065	28x1.5
0662-020		20	30	42						690	1090	300	0.100	
	RK.0-020	20	32	42	27	42	8	43	5.5	647	1180	250	0.110	33x1.5
0662-025		25	37	54						880	1320	240	0.200	
	RK.0-025	25	40	59	37	50	8	51	5.5	882	1860	250	0.210	42x1.75
0662-030		30	42	64						1200	1840	200	0.270	
	RK.0-030	30	45	64	40.5	58	10	60	6.6	1180	2650	200	0.290	46x1.75
0622-040		40	55	78						2040	3200	150	0.565	