

TANDEM FLANGED ALUMINIUM HOUSINGS

These aluminium linear sets contain two ball bushings in line. The housing has mounting holes on one face to enable the unit to be bolted to a bulkhead as is shown in the drawing below.

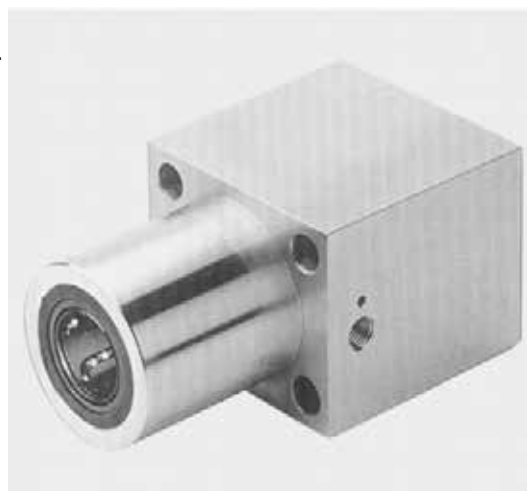
As with our other sets the flanged sets are available with different types of ball bushings.

Permutations available: (example is for 20mm bore)

Ball bushing with plastic cage and seals: TF83-220

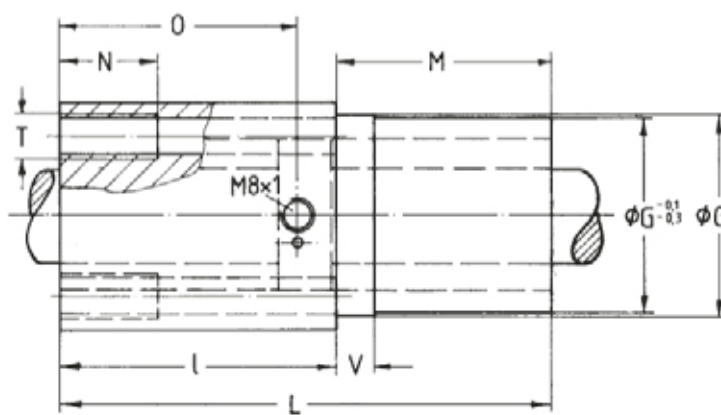
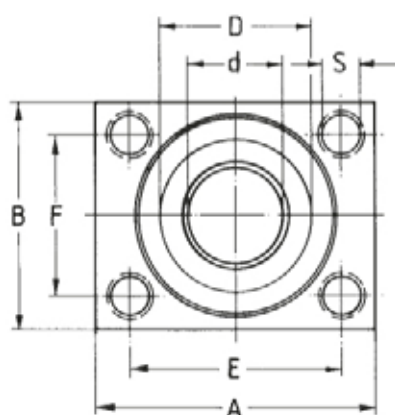
All steel ball bushing without seal: TF83-020

All STAINLESS steel bushing without seal TF83-520



The sealed types can operate up to 80° C.

For higher temperatures specify the unsealed type (TF83-0..).



PART	d	D	G*	A	B	L	E	F	S*	T	I	M	N	O	V	Load C=C ₀ (N)	Weight (kg)
TF83-212	12	22	30	42	34	76	32	24	5.3	M6	46	30	13	35	10	1100	0.22
TF83-216	16	26	35	50	40	84	38	28	6.6	M8	50	34	18	40	10	1300	0.33
TF83-220	20	32	42	60	50	104	45	35	8.4	M10	60	44	22	50	10	1750	0.58
TF83-225	25	40	52	74	60	130	56	42	10.5	M12	73	57	26	63	10	1950	1.15
TF83-230	30	47	61	84	70	152	64	50	13.5	M16	82	70	34	74	20	3100	1.70

*We recommend the bore of the corresponding housing to be H7

+ locating screw DIN912 – 8.8