

OPEN TANDEM ALUMINIUM LINEAR HOUSINGS

Two open type ball bushings are incorporated into these precision aluminium alloy housings.

Using these aluminium tandem sets eliminates the need to precisely mount two single housings.

As with our other sets the tandem sets are available with different types of ball bushings.

Permutations available: (example is for 20mm bore)

Ball bushing with plastic cage and seals: TE33-220

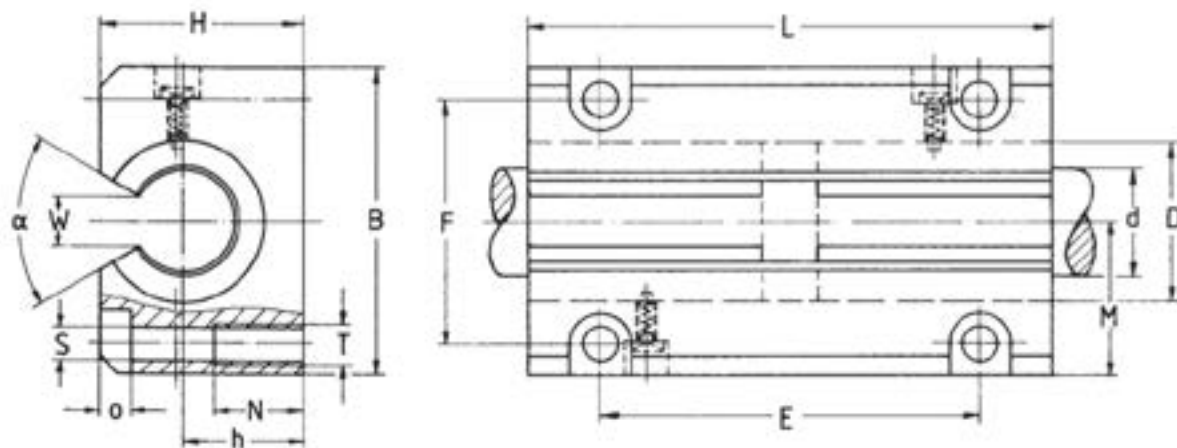
All steel ball bushing without seals: TE33-020

All STAINLESS steel bushing without seal TE33-520



The sealed types can operate up to 80°C.

For high temperature applications specify the unsealed version (TE33-0..).



PART	d	B	H	h	L	D	E	F	M*	S	T	N	O	W	α	Load C (N)	Load C ₀ (N)	Weight (kg)
TE33-212	12	42	28	18	76	22	56	32	21	4.3	M5	11	4	7.5	78	830	1620	0.26
TE33-216	16	52	35	22	84	26	64	40	26	5.3	M6	13	5	10	78	1010	2000	0.38
TE33-220	20	60	42	25	104	32	76	45	30	6.6	M8	18	6	10	60	1510	3140	0.67
TE33-225	25	76	51	30	130	40	94	60	38	8.4	M10	22	8	12.5	60	1600	3400	1.31
TE33-230	30	86	60	35	152	47	106	68	43	8.4	M10	22	8	12.5	50	2620	5780	2.01
TE33-240	40	108	77	45	176	62	124	86	54	10.5	M12	26	10	16.8	50	3600	8580	3.93
TE33-250	50	130	88	50	224	75	160	108	65	13.5	M16	34	12	21	50	6220	21020	6.20

*Available with ± 0.02 mm tolerance for side mounting

These Aluminium Sets are also available slotted as Adjustable Type sets. Order part no TE34- ... with suffix depending on ball bushing required (see above). In general, because of the close tolerances of ball bushings fitted to our aluminium sets we do not recommend the use of the adjustable type.