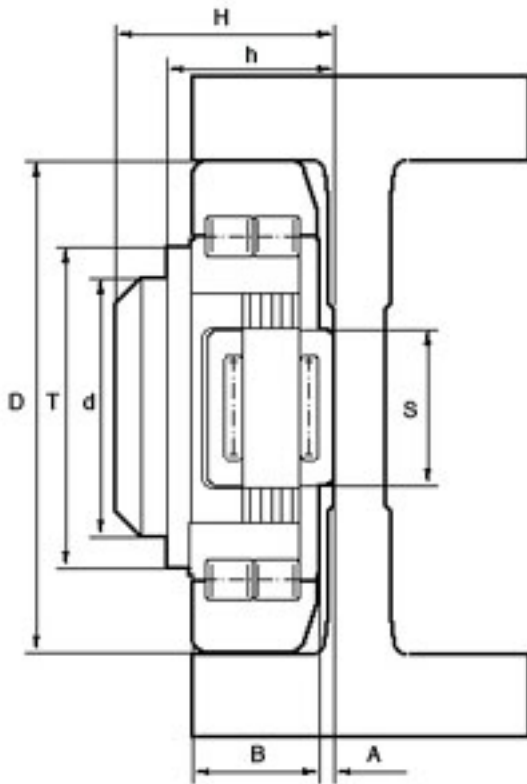


JUMBO COMBINED ROLLER BEARINGS

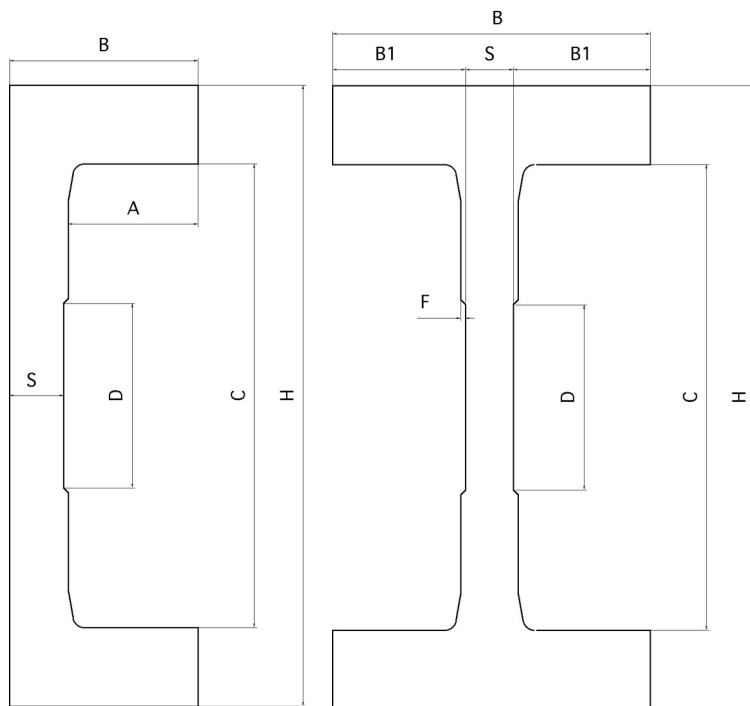


Co = static load rating
 C = dynamic load rating
 FC = C section channel
 FM = I section channel

The side rollers on Jumbo bearings are eccentrically adjustable

PART	D	T	d	H	h min-max	B	A	S	r	Radial	Radial	Axial	Axial	PROFILES
										C kN	Co kN	C kN	Co kN	
4.089	165	113	80	69	53-	40	5	50	3	213	388	85	133	FC165
					56									FM165
4.090	190	124	100	84.5	64.5-	48	6.5	60	4	266	500	100	180	FC190
					67.5									FM190
4.091	220	146	110	94.5	74.5-	58	6.5	75	5	326	681	138	257	FC 220
					77.5									FM 220
4.092	250	168	120	102	77-	60	7	75	5	369	748	138	257	FC 250
					80									FM 250
4.093	280	188	150	119.5	89.5-	72	7.5	90	5	489	1066	182	488	FC 280
					93.5									FM 280
4.094	320	218	140	135	110-114	85	10	90	8	642	1370	210	422	Please enquire.
4.095	340	240	150	119.5	120-124	89	10	90	8	735	1600	210	422	Please enquire.
4.096	390	242	170	200	150-154	119.5	10	100	8	1050	2243	232	463	Please enquire.

JUMBO STEEL PROFILES



C SECTION

PART	C	H	B	S	D	A	Weight (kg/m)	ϵ_x (mm)	ϵ_y (mm)	I_x (cm ⁴)	I_y (cm ⁴)	W_x (cm ³)	W_y (cm ³)
FC165	165.4	230	57.5	18	80	38.5	53.3	19.9	115	4410.5	174.6	383.5	87.5
FC190	190.4	255	77	22	80	53	73.7	25.9	127.5	7631.6	434.2	598.6	167.7
FC220	220.4	295	85	20	125	62.5	86.1	29	147.5	12632.7	6720.4	856.4	231.7
FC250	250.4	344	94	26.5	125	65.5	122.8	32.4	172	23371.6	1117.4	1358.8	344.9
FC280	280.4	394	114	26.5	125	85.5	161.85	40.8	157	42473.6	2354.8	2156	577

I SECTION

PART	C	H	B	S	D	B1	F	Weight (kg/m)	ϵ_x (mm)	ϵ_y (mm)	I_x (cm ⁴)	I_y (cm ⁴)	W_x (cm ³)	W_y (cm ³)
FM165	165.4	230	95	16	70	39.5	1	72.7	47.5	115	6894	472	600	99
FM190	190.4	255	130	20	70	55	2	100.4	65	127.5	12003	1203	941	185
FM220	220.4	295	150	20	90	65	2	126.3	75	147.5	20991	2119	1423	283
FM250	250.4	345	160	25	90	67.5	2	172.7	80	171.5	37838	3274	2206	409
FM280	280.4	375	190	30	120	80	2	212.8	95	187.5	55163	5492	2942	578